



HUNTER INDUSTRIES
Built on Innovation

Hunter®

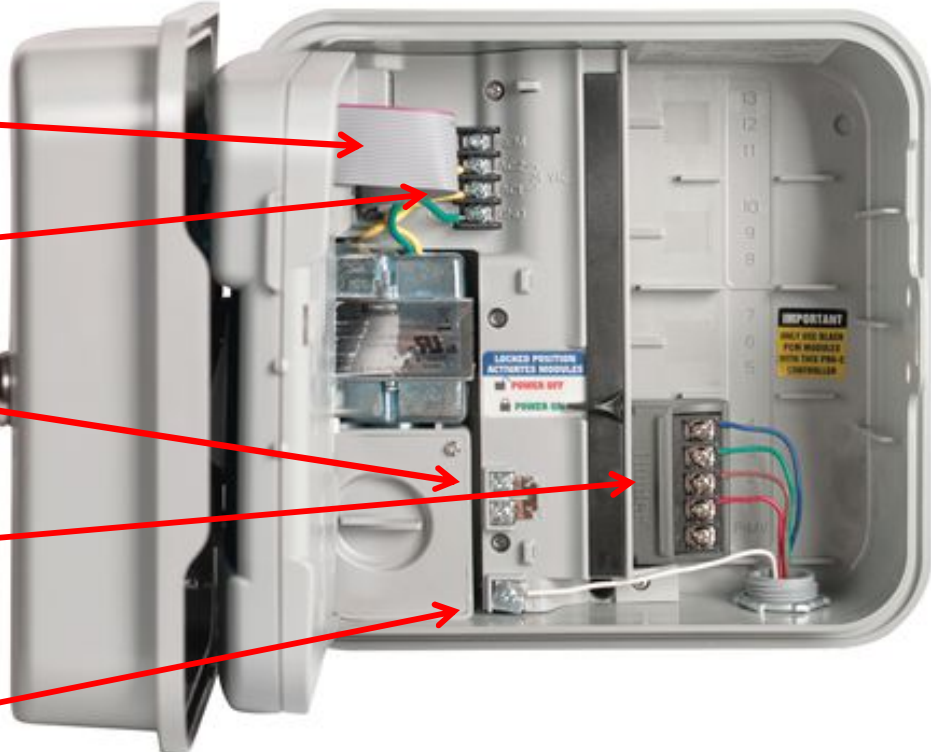
Pro-C Face Pack Enhancements

- New I-Core style tactile buttons
- Addition of Solar Sync to dial position
- Branded with more simple look and feel with prominent PRO-C logo
- Replaceable Lithium 3v battery



Pro-C Back Plane Enhancements

- New more flexible ribbon cable similar to I-Core
- Easier access to wiring
- Re-location of Sensor Terminals
- New 4-Station base module PN #820200
- Re-location of Common Screw



Pro-C Firmware Enhancements

- Addition of Solar Sync to dial position
 - Allows for easier installation of Hunters EPA WaterSense approved smart control Add-on device
- Addition of Solar Sync Delay hidden feature
 - Allows user to delay climate corrections to Pro-C for up to 99 days
- Addition of Cycle & Soak hidden feature
 - Allows user to develop more useful scheduling for water conservation purposes

Pro-C Details

- Part number for expansion modules remains the same: (PCM-300, PCM-900)
- New 4-Station base module (PN #820200)
- New Pro-C facepack (PN #821501) is not compatible with old Pro-C due to the addition of Solar Sync



Pro-C Details

- PC-300 will be converted to PC-400
- PCC series controllers will remain the same and only be offered in 6 and 12 station fixed controllers.

Why use Modular Controllers?

- Always have the right controller for every job
- Easy to retrofit for future expansion
- Servicing is made easy with removable components
- Simplified inventory means lower costs



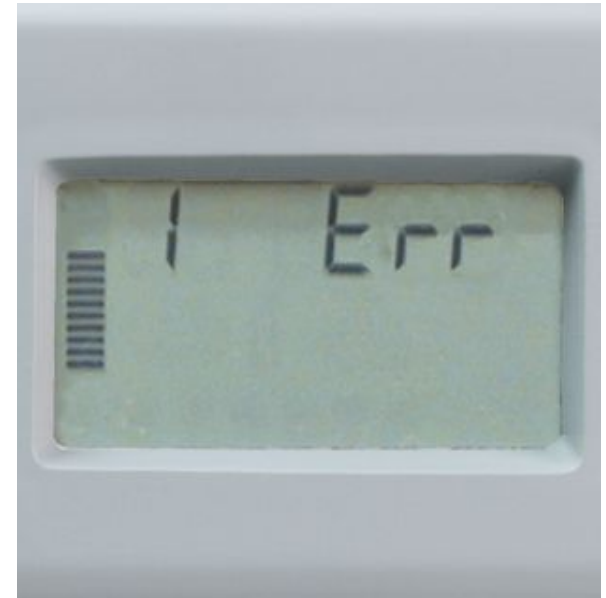
Non-Volatile Memory Saves Program Data

- All Hunter controllers retain program data in non-volatile memory
- No lost programs in the event of a power outage
- No phantom default programs
- Keep time current without the need for a battery



On-Board Diagnostics Help You Troubleshoot Problems

- Hunter controllers have automatic short-circuit protection
- No fuses or circuit breakers to blow
- No lost irrigation cycles
- **Hunter Quick Check™**
(helps to quickly identify wiring problems)



Flexible Programming Equipped to Handle Tough Water Restrictions

- Hunter controllers have multiple- program capability
- Customize your watering schedule to meet restrictions
- You choose the days to water



Water Conservation Features

Easily Accommodate Weather Changes

- Seasonal adjust allows easy changes to station run times
- Programmable rain off
- Easy rain sensor connection with sensor bypass capability
- Sensor input programmable by station
- Cycle and Soak feature prevents runoff



Remote-Ready Right Out of the Box Saves Time and Money

- Hunter controllers are remote control capable right out of the box!
- Operate controllers in the field with the ROAM remote control system
- Remotes provide labor savings for start-ups, service calls, and winterizations
- Hunter remotes can be carried from site to site

